

TECHNICAL SERVICE BULLETIN

71-C-10

NO.



TRIUMPH

June 1971

SUBJECT:

Soft Top Operation

MODELS:

STAG

Appended below are instructions and diagrams with regard to the fitting procedure and the raising and lowering of the soft top.

STAG SOFT TOP OPERATION

To raise soft top:

1. Release the tonneau cover lock and raise cover.
2. Grasp soft top front rail and lift upward and forward. (If the rear section of the top becomes jammed in the stowage compartment, do not use force or continue to attempt top erection otherwise severe damage will occur).

See special note.

3. Engage soft top front rail catch pins in locations on top of windscreen frame. Ensure top has engaged with pillars at rear of doors then lock front rail catches.
4. Close tonneau cover.
5. Smooth out sides of soft top above side rails, pressing the velcro strips into contact.
6. Release the spring loaded locking catch on the left side of the soft top frame and lower the rear section. Snap rear rail plunger into body catch.

To lower soft top:

1. Release rear rail and tonneau cover catches. (Double action on release mechanism).
2. Raise rear of soft top carefully folding backlight and quarter windows inwards. Ensure cover material is pulled outward clear of folding hood members.

To lower soft top (continued):

3. Continue to raise rear section of top until spring loaded locking catch on left side of frame engages with striker pin on elbow rail. (Ensure catch is securely locked over pin).
4. Raise tonneau cover.
5. Slide fingers between soft top cover and side rails to release velcro strips.
6. Release front rail catches from frame over windscreen.
7. Raise front rail and fold top rearward into stowage compartment, easing hood material over the rear seat squab during the process.
8. Ensure top is fully folded down and close tonneau cover.

Special note: If the soft top has been lowered without the spring loaded catch locked over the striker pin in the left hand elbow rail, or the right hand gravity catch has failed to engage for any reason, the rear section of the top will jam during raising. Should this occur, slide a hand inside the stowage compartment at the rear of the soft top, grasp material surrounding the rear lower rail and lift.

The spring loaded and gravity catches are adjustable in relation to the striker pins by means of elongations in the catch mounting brackets. (Refer to Service Bulletin # 71-C-9).

PROCEDURE FOR FITTING COMPLETE SOFT TOP ASSEMBLY

Special equipment required:

Jigging bolts - 2 of

Make up as illustrated.

Soft top attachment details:

	<u>Part #</u>	<u>Qty Per Car</u>
Setscrew with captive lock washer	519041	6 of
Plain washer	WP 0008	6 of
Striker pin assembly (rear rail)	715075	1 of
Setscrew	HU 0704	2 of
Lockwasher	WL 0207	2 of
Plain washer	WP 0007	2 of
Tension spring	626536	2 of

Soft top assembly installation:

(Tonneau cover to be in open position)

1. Fully open out front section of soft top (ensure spring loaded catch on left side of frame is engaged with striker pin and right side gravity catch is free to pivot).
2. Fit a jiggling bolt in frame members, both sides. Figure 1 of illustration.
3. Lift soft top assembly into position on car, locating and securing front rail to upper windscreen frame.
4. Locate spring bar on each side of frame under brackets attached to wheel arches. Items A, Figure 2.
5. With set screws 519041 and plain washers WP 0008, secure frame mounting brackets finger tight through rearmost and upper forward fixing points. Arrowed Figure 2.
6. Set hood position relative to top of pillars at rear of doors by means of mounting bracket elongations and tighten attachment screws.
7. Remove jiggling bolts.
8. Release front rail from windscreen frame and partially fold back top to allow the mounting bracket center fixing setscrew to be inserted and tightened. See inset Figure 2.
9. Draw soft top forward and re-attach front rail to windscreen frame.
10. Fit striker pin assembly 715075 to center of soft top rear rail with setscrews HU 0704, lockwasher WL 0207 and plain washer WP 0007.
11. Fit tension springs 626536 between frame arms and wheel arch brackets as B. Figure 2.
12. Close tonneau cover.
13. Release elbow rail spring loaded catch and lower rear section of soft top.
14. Adjust rear rail striker pin assembly to body catch.
15. Check stowage operation and fit of soft top generally. Re-adjust where necessary.

FITTING NEW COVER TO STAG HOOD

Refer to plates T.26 and T.27 in Stag Graphic Catalog for identification of parts numbered.

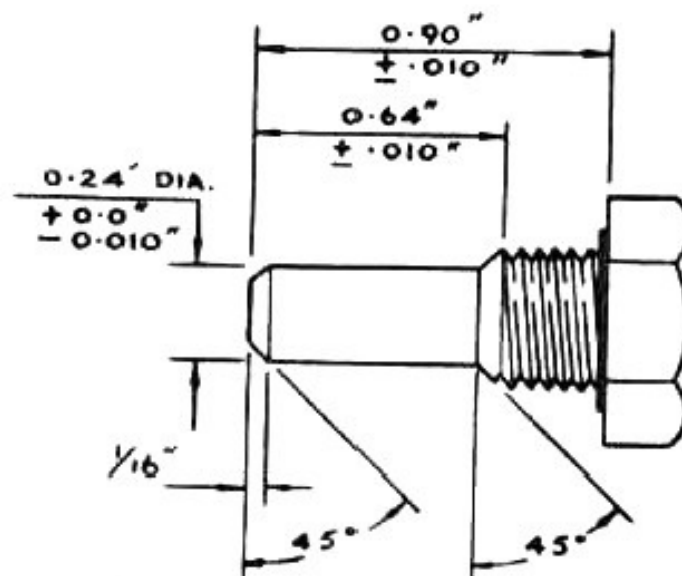
1. Remove rubber seal part number 622251 and retaining channel part number 713627 from header rail part number 813768. Remove rubber seals part number 622593 (2 of), retaining channels part number 715253/4 and 714211/2 from rear hood stick part number 811789. Remove rear catch part number 715075.
2. Remove rubber seal part number 622522 (2 of) retaining channels part number 714241/2 from main hoodstick part number 811799.
3. Remove old hood cover from frame, taking care not to disturb material covering of header rail and rear stick.
4. Check operation of hood frame to body.
5. Solution 3" strip along front of rear hood cover, both 'B' post attachment flanges, rear of hood cover where attached to rear stick and hood stick retaining strips, using Dunlop adhesive S 758, or similar.

Solution hood frame rear stick, header rail, 'B' posts and three hoodsticks and leave approximately 15 minutes.

6. Mark off centers of header rail and rear stick and centers of front and rear of hood. Position hood cover placing evenly all round. Fix hood cover at top corners of 'B' post corner and cant rail, using the Velcro tape to hold in position at same time securing hood to 'B' posts.

Strain hood forward and secure to header rail, making sure hood is tight on top, strain down at rear quarters adjacent to webbing and secure hood to rear stick making sure that rear light and quarters are smooth and tight.

7. Unlock hood both front and rear, turn material under header rail and rear stick and attach material to top hood sticks.
8. Replace retaining channels and trim off surplus material. Replace rubber seals and rear catch and check for operation of hood.



JIGGING BOLT TO LOCATE HOOD FRAME STICK FOR
HOOD TO BODY MOUNTING

Make from $3/8''$ UNF x 1" setscrew
(2 of)

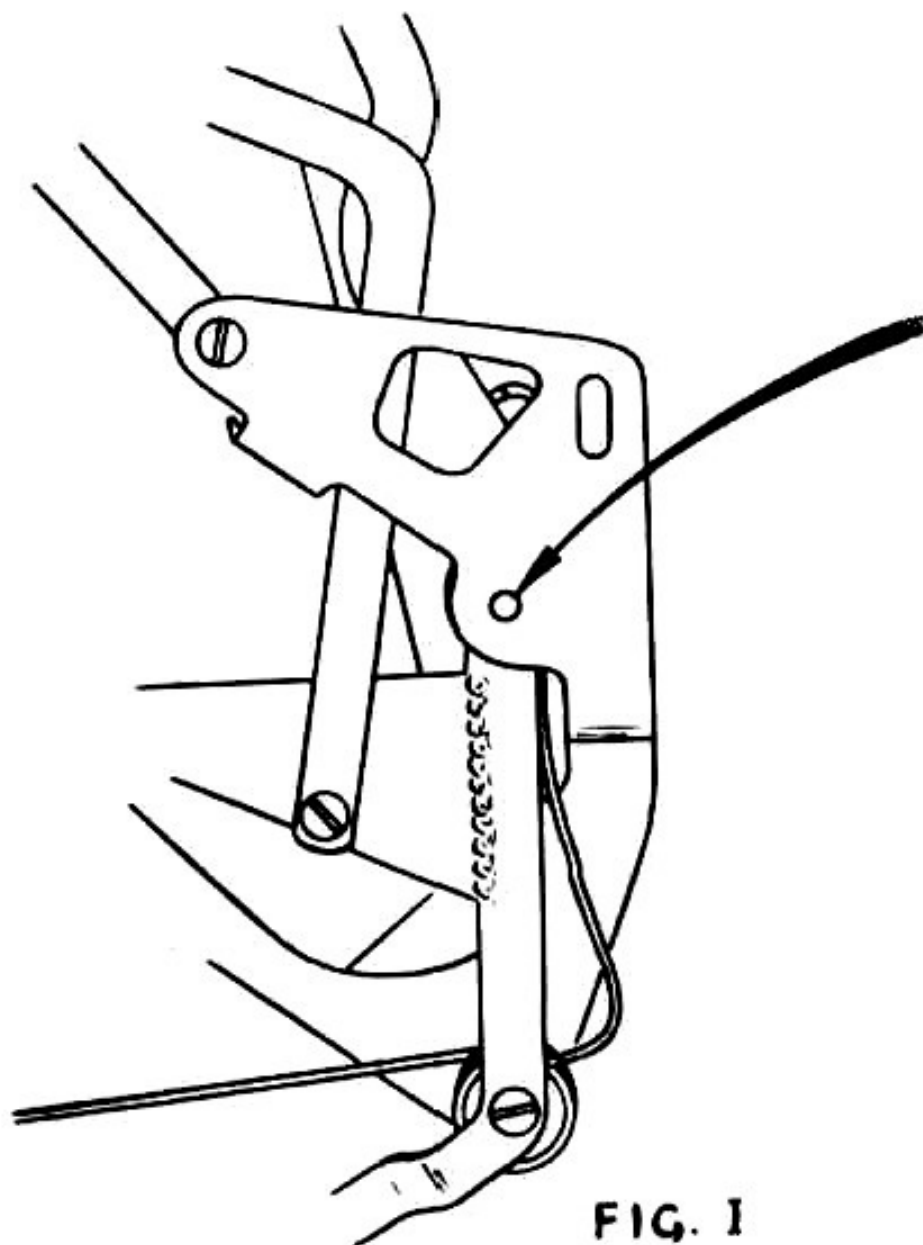


FIG. 1

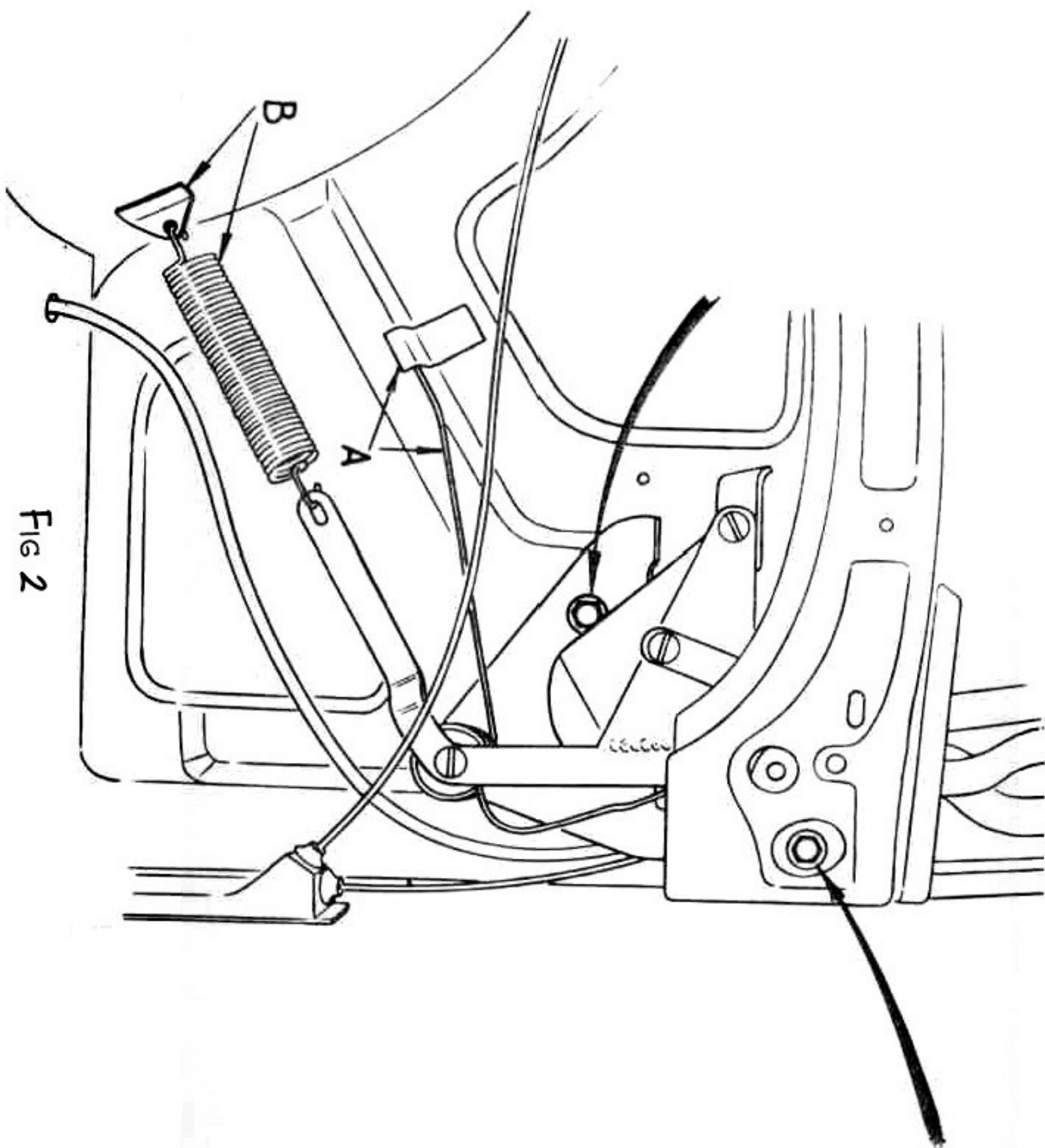


FIG 2

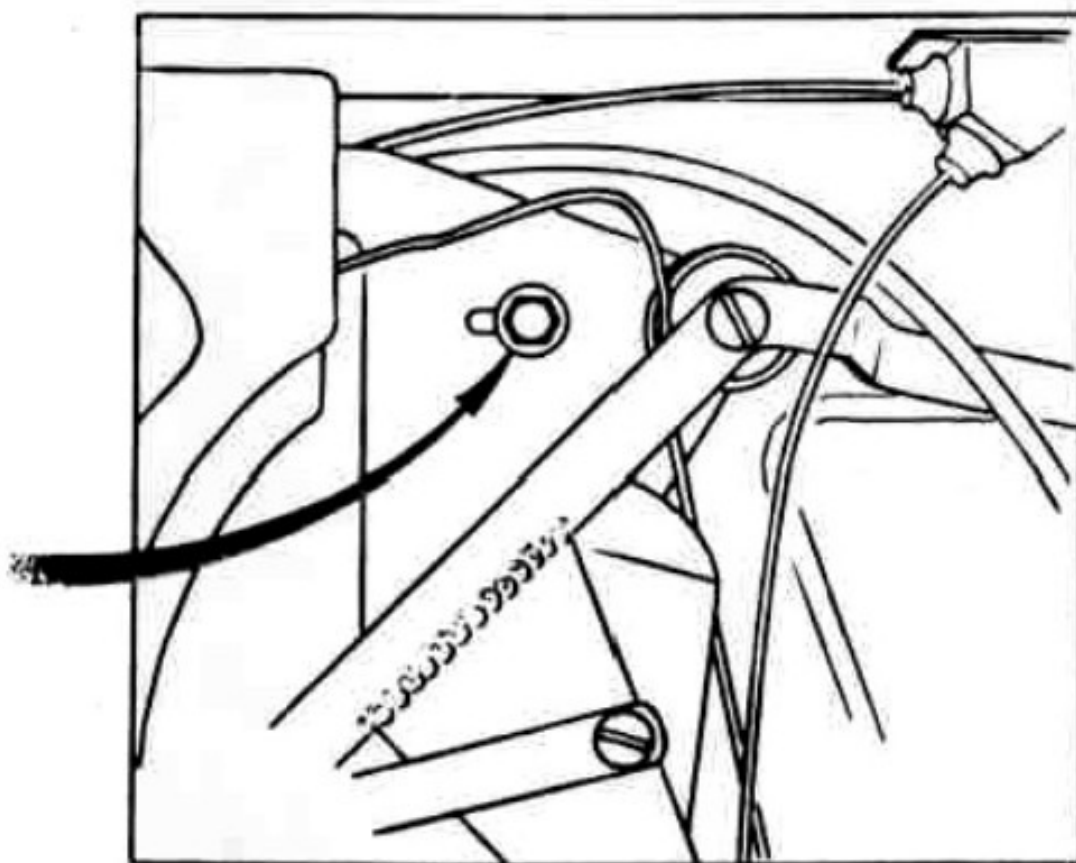


Figure 2